

# Tsukiden

Tsukiden Electronics Philippines, Inc.

## COMPANY PROFILE

Your Electronic Manufacturing Service Provider  
(EMS)

*“Bridging Customer to their Needs”*

## Mission

To be the preferred company providing  
high value added  
Electronic Manufacturing Services  
to our Customers.

## Our Key Strength

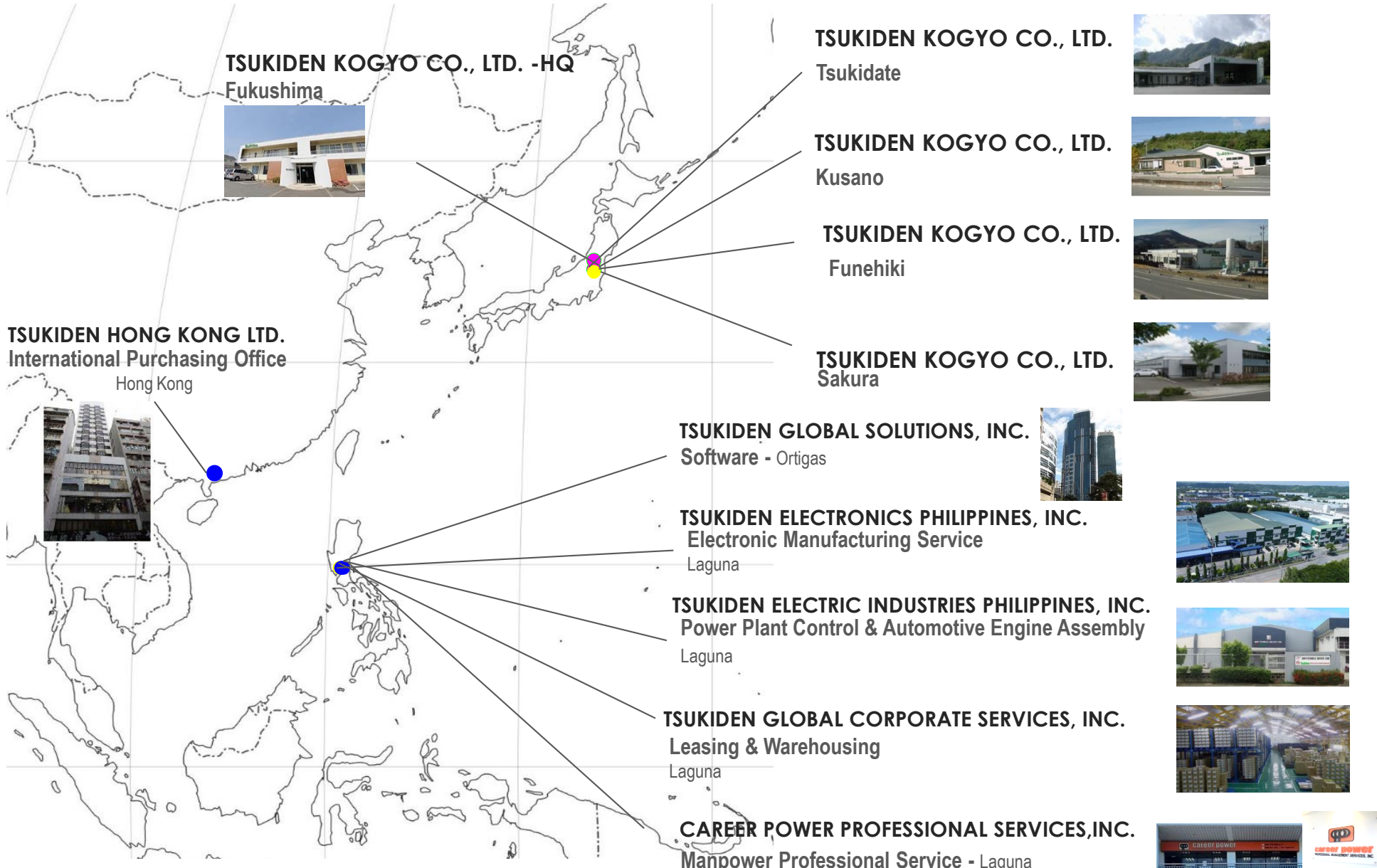
- Using Up to date SMT Technology
- Highly Flexible and Motivated Employees
- Customer focused production set-up
- Can do both “ *high mix low volume and low mix high volume production*”.
- Can serve short lead-time product requirement.

## Capabilities

- PCBA Assembly
  - SMT & Through Hole
- Chips on Flex Assembly
- Sub Assembly & Complete Box Build Assembly
- Prototype Assembly
- In-circuit/Functional Testing
- Burn-in Testing
- Automated Optical Inspection (AOI)
- X-ray Inspection
- Baking
- BGA Rework
- Conformal Coating/Potting
- Incoming Inspection
- Consignment & Turnkey

## Services

- Rework and Warranty Repair
- Design of PCB's for manufacturability
- Design for Testability
- Reliability test support
- Parts material storage and control

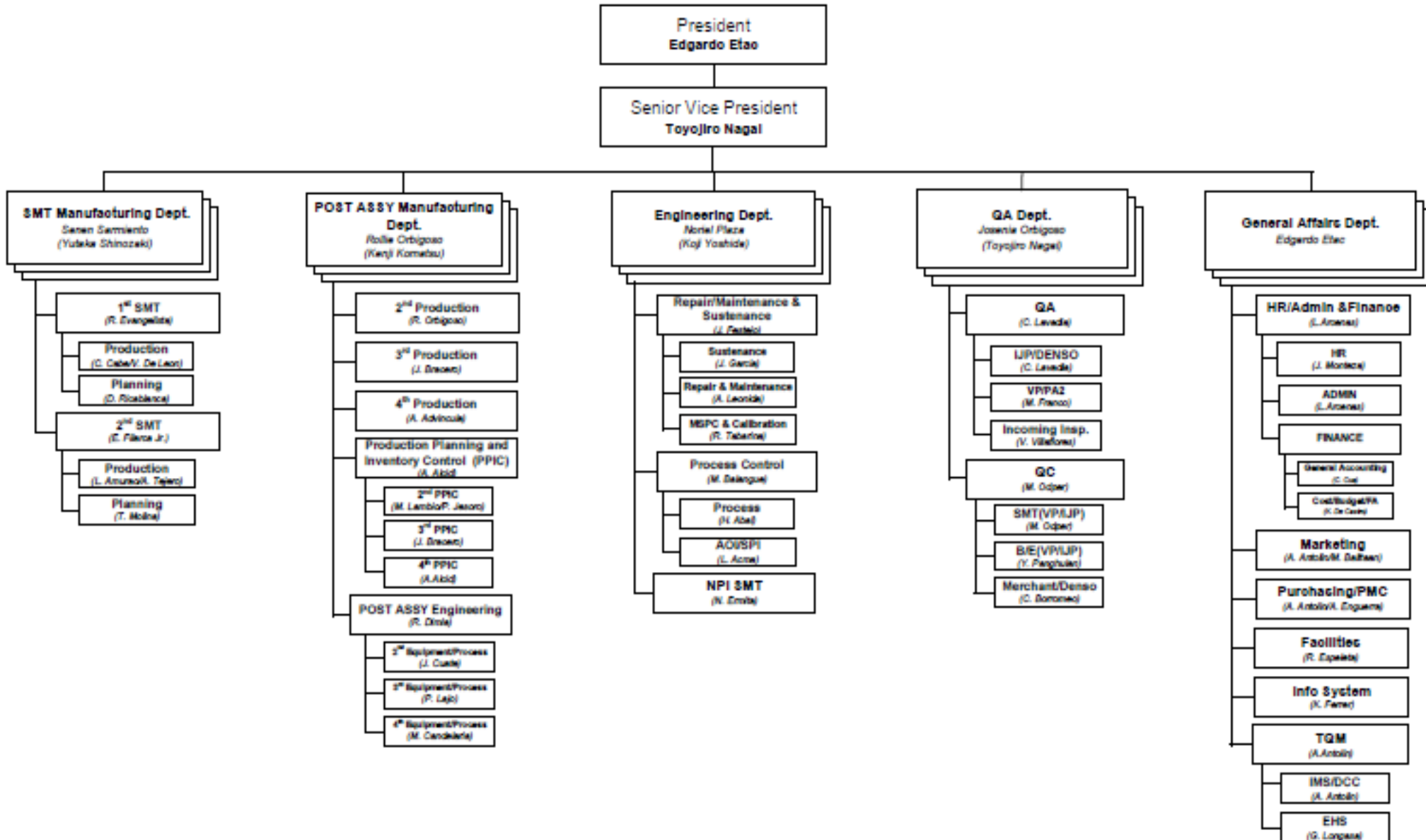


1987	JUN	Tsukiden Kogyo Philippines, Inc. start its operation in the Philippines
		Main activity is HDD/FDD PCB/FPC assembly sub-contracting
1988	JUL	Tsukiden Electronics Industries, Inc. (TEII) was established in Quezon City, Phils.
		Main business activity is assembly of computer peripherals particularly FDD
1989	NOV	TEII started production of 3.5 Hard Disk Drive (HDD)
1993	AUG	Laguna Electronics, Inc. (LEI) was established in Laguna Technopark, Biñan, Laguna
1994	MAY	LEI started production of Analog Mobile Phone
1995	SEP	LEI constructed Plant 2 for the assembly of 3.5 Hard Disk Drive (HDD)
1996	NOV	LEI started its own SMT Assembly Line and started producing FDD-PCBA
1997	JUL	ISO 9002 Certification for the Plant 2 by SGS Yarsley Int'l. Certification Services Ltd.
1997	SEP	ISO 9002 Certification for the Plant 1 by TUV Produt Service
1997	SEP	LEI-Plant 2 was renovated to assemble high capacity of IBM-NEC 3.5 Hard Disk Drive
1997	DEC	LEI-Plant 2 started production of IBM-NEC 3.5 Hard Disk Drive
1998	MAR	ISO 14001 Certification by SGS Int'l Certification Services
1998	MAR	LEI-Plant 1 started production of Zip drive
2003	MAY	ISO 9001 : 2000 certification by AJA Registrars, Inc.
2003	DEC	OHSAS 18001 : 1999 Certification by AJA Registrars, Inc.
2004	OCT	ISO/TS 16949 : 2002 Certification by SGS Philippines
2006	APR	LEI started its operation of Chip-on-Flex (COF)
2010	SEP	Company Name change to Tsukiden Electronics Philippines, Inc.
2011	SEP	ISO 13485:2003 Certification by SGS Philippines
2014	MAR	Started operation for extension facility LTC-SEZ (Bldg. 1) for the Assy of Multi Media Projector
2017	OCT	IATF 16949 : 2016 Certification (First company in PH certified by SGS)
2021	APR	Change Corporate logo to harmonize with Tsukiden Group of Companies

Tsukiden Electronics Philippines, Inc. is a wholly owned subsidiary of Tsukiden Hong Kong Ltd.

- Date of Incorporation - March, 1992
- Paid-up Capital - Php 300,000,000.00 (US\$7M)
- Plant/Start of Commercial operation/Area:
  - P1 : August, 1993
  - P2: September, 1995
- \* All sites are 100% backed-up by emergency power generator \*
- Number of Employees: 988 MP
- Production Lines : 6 Solder wave lines / 28 SMT lines with 800M shot count capability
- Chairman : Mr. Kazuma Hanzawa
- President : Mr. Edgardo Etac





## SMT PRODUCTION LINE



## POST ASSEMBLY LINE





**Ams Asia** Philippines

**Applied Electronics Corporation** (Japan)

**ARKUS Electronics** Philippines Inc.

**BOSCH** (Netherlands)

**CEBU MITSUMI**, Inc. (Philippines)

**DELTADRIVE** Phils. Inc. (Philippines)

**DENSO TEN** Philippines

**DX Antenna** Philippines, Inc.

**EDA** Philippines Industries Inc.

**ELEMATEC** Philippines, Inc.

**Epson Precision** Philippines, Inc.

**GINTUGA** Philippines, Inc.

**GLORY** Ltd. (Philippines.)

**HOKUBU** Communication (Japan)

**ISENSORS**, Inc. (Philippines)

**Japan Display** Inc. (Japan)

**JCM** Gold (Japan)

**KAERTECH** Limited (Hong Kong)

**LITTELFUSE** Phils, Inc. (Philippines)

**MIDORIYA Electric** (Philippines) Corporation

**MITSUBISHI HITACHI** Power Systems, Ltd. (Japan)

**Northstar** Technologies Industrial Corp (Philippines)

**Nikkoshi Phils. Corp.** (Philippines)

**Nihon Denkei** (Philippines)

**NOVALUX** Electronics (Hongkong)

**SANKO** Semiconductor Co., Ltd. (Japan)

**SANYO DENKI** Philippines, Inc.

**SECURE ELECTRONICS** Pty Ltd. (Australia)

**SUMITRONICS** Philippines, Inc.

**SOLPHILS** (Philippines)

**SUNBIRD** Engineering Ltd. (Hong Kong)

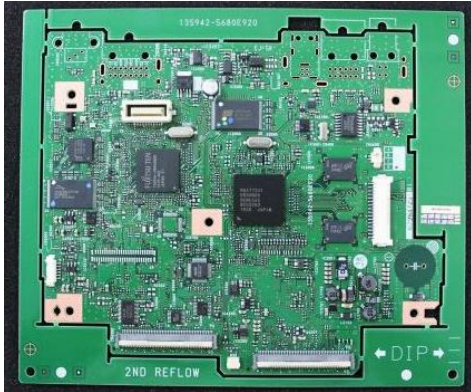
**SUNPOWER** Philippines Manufacturing Limited

**TOA** Electronics Group (Japan)

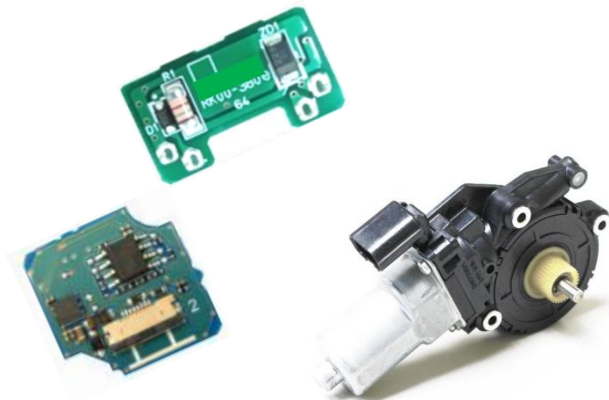
**Tsukasa Electronics** Philippines, Inc.

# Automotive Electronics

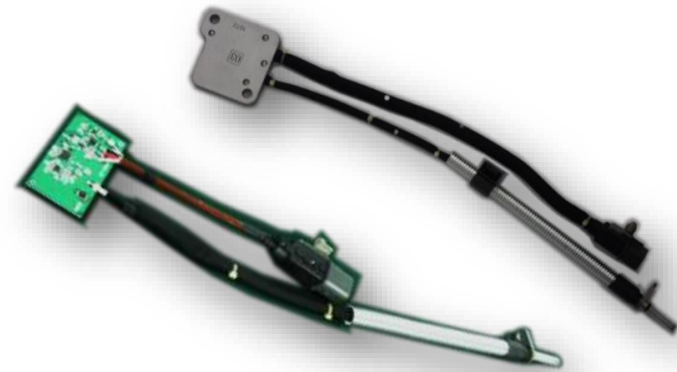
## CAR Navigation System



## Sensor & Power Window Controller



## Turbo Sensor Assembly

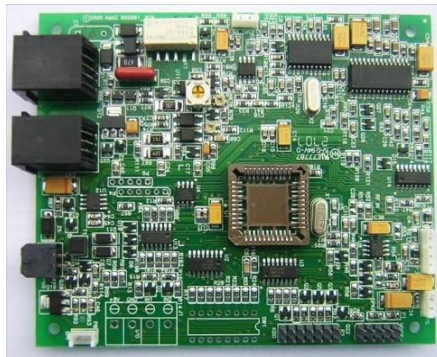


# Medical

Pulse Oximeter

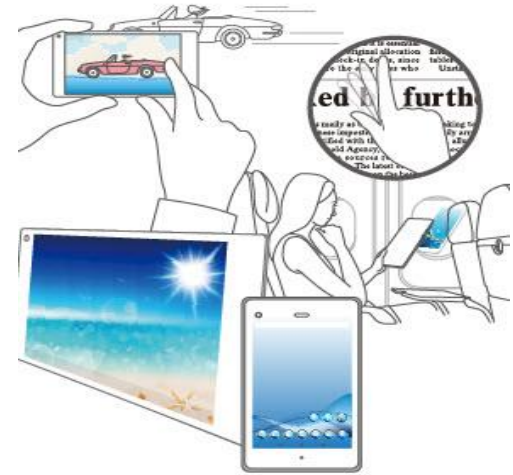
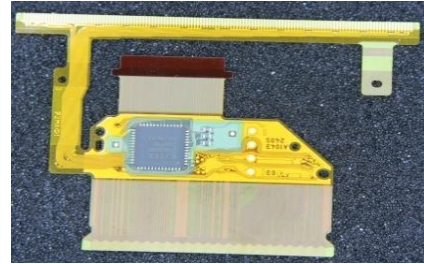
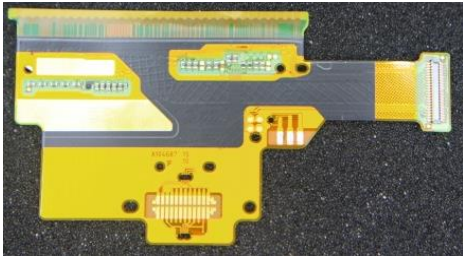


Medical Alert System



# Telecommunication

## Smart Phone & Tablet



## Fiber Optics



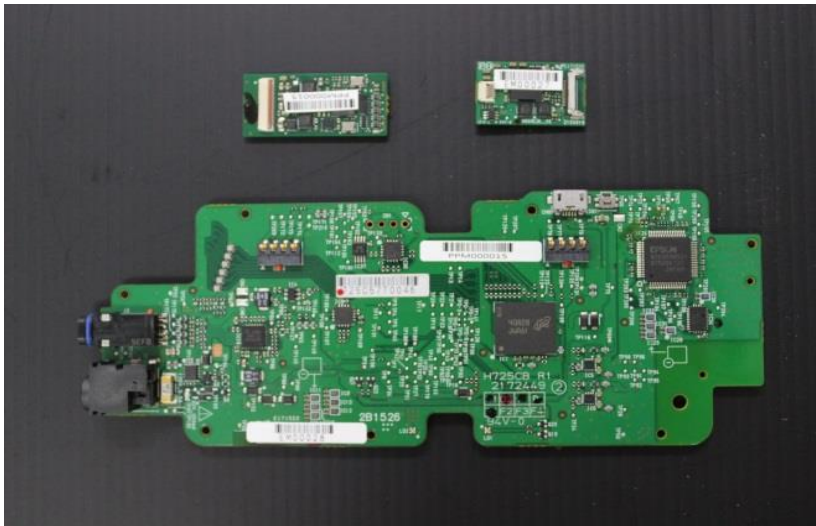
## Multi band cellular antennas



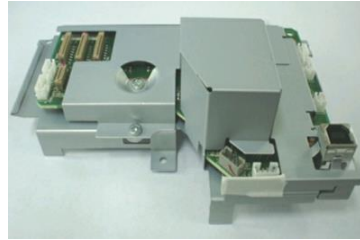


# Wearables

## Smart Glasses



# Consumer



Inkjet Printer

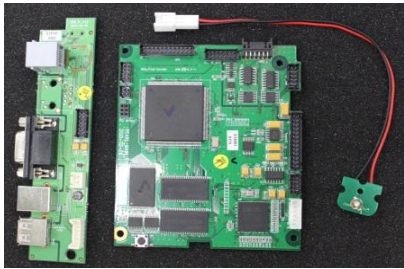


Multimedia Projector



# Consumer

## Cash Counting Machines



## Portable Label Printer



## Public Address System



## Smart Toothbrush



**MANPOWER**

• President/Japanese/Manager/Section Head	21
• Engineer	54
• Supervisor/Shift Leader/Specialist	83
• Assistant	9
• Technician	62
• QA Inspector	43
• Operator (Regular)	156
• Contractual	560
<b>Total</b>	<b>988</b>

**SEX/CIVIL STATUS**

	<b>MANPOWER</b>	<b>MARRIED</b>	<b>SINGLE</b>
<b>MALE</b>	<b>17%</b>	<b>30%</b>	<b>70%</b>
<b>FEMALE</b>	<b>83%</b>	<b>16%</b>	<b>84%</b>

**EDUCATIONAL PROFILE OF OPERATORS**

- **College Graduate** **24%**
- **College Level** **9%**
- **2-yr Vocational Course Graduate** **13%**
- **1-yr Vocational Course Graduate** **6 %**
- **High school Graduate** **48%**

## (Environmental Management)



**ISO 14001 (Ver 2015)**

**Sept 2025**



**ISO 45001 (Ver 2018)**

**Sept 2025**

## (Quality Management)



**ISO 9001 (Ver 2015)**

**Sept 2025**



**ISO 13485 (Ver 2003)**

**Sept 2014**

**“The First Philippine company certified by SGS in IATF 16949:2016”**

**IATF 16949 (Ver 2016)**

**Feb 2024**





## **Electronics Manufacturing Service (EMS)**

Tsukiden Kogyo Co. Ltd. (JP) : [www.tsukiden.com](http://www.tsukiden.com)

Tsukiden Electric Industries Philippines, Inc. (PH) : [www.tsukiden-industries.com](http://www.tsukiden-industries.com)

## **Software Solutions**

Tsukiden Global Solutions, Inc. (PH) : [www.tsukiden.com.ph](http://www.tsukiden.com.ph)

## **Warehousing & Logistics**

Tsukiden Global Corporate Services, Inc. (PH) : [www.tsukiden-global.com](http://www.tsukiden-global.com)

## **Manpower Outsourcing**

Career Power Professional Management Services, Inc. (PH) : [www.careerpower.com.ph](http://www.careerpower.com.ph)

## **International Purchasing Office (IPO)**

Tsukiden Hong Kong Ltd. (Hong Kong)

Thank you very much

*Mabuhay!*