

# Tsukiden

Tsukiden Electronics Philippines, Inc.

## COMPANY PROFILE

Rev. 00 (June 2024)

*Bridging Customers to their Needs.*

**Tsukiden** \_\_\_\_\_

Your Electronic Manufacturing Service Provider  
(EMS)

*“Bridging Customer to their Needs”*

### **Mission**

To be the preferred company providing  
high value added  
Electronic Manufacturing Services  
to our Customers.

© 2024 Tsukiden Electronics Philippines, Inc.

## Our Key Strength

- Using Up to date SMT Technology
- Highly Flexible and Motivated Employees
- Customer focused production set-up
- Can do both “ *high mix low volume and low mix high volume production*”.
- Can serve short lead-time product requirement.

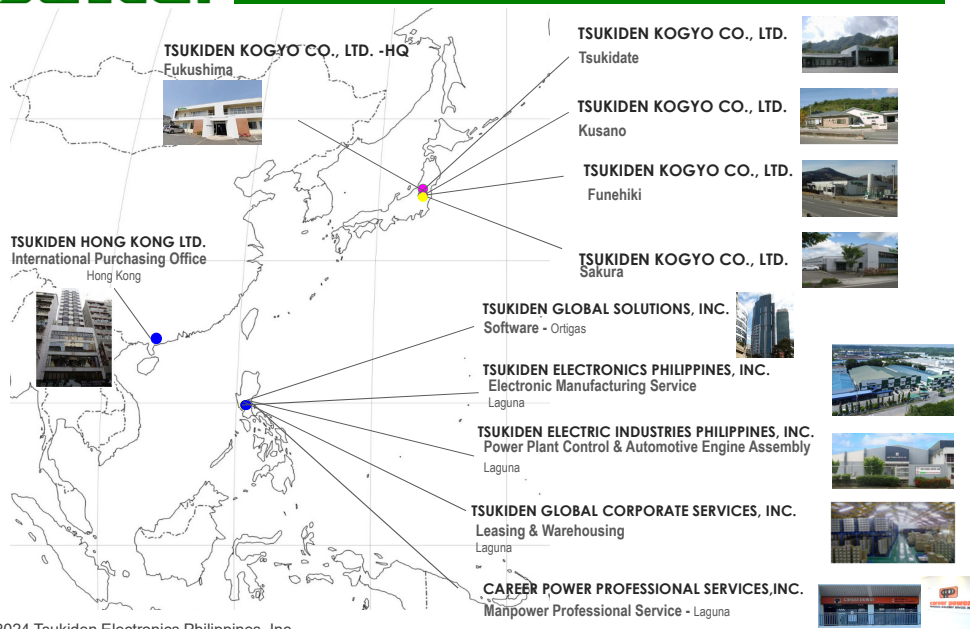
## Capabilities

- PCBA Assembly
  - SMT & Through Hole
- Chips on Flex Assembly
- Sub Assembly & Complete Box Build Assembly
- Prototype Assembly
- In-circuit/Functional Testing
- Burn-in Testing
- Automated Optical Inspection (AOI)
- X-ray Inspection
- Baking
- BGA Rework
- Conformal Coating/Potting
- Incoming Inspection
- Consignment & Turnkey

## Services

- Rework and Warranty Repair
- Design of PCB's for manufacturability
- Design for Testability
- Reliability test support
- Parts material storage and control

## Tsukiden Group of Companies



1987	JUN	Tsukiden Kogyo Philippines, Inc. start its operation in the Philippines Main activity is HDD/FDD PCB/FPC assembly sub-contracting
1988	JUL	Tsukiden Electronics Industries, Inc. (TEII) was established in Quezon City, Phils. Main business activity is assembly of computer peripherals particularly FDD
1989	NOV	TEII started production of 3.5 Hard Disk Drive (HDD)
1993	AUG	Laguna Electronics, Inc. (LEI) was established in Laguna Technopark, Biñan, Laguna
1994	MAY	LEI started production of Analog Mobile Phone
1995	SEP	LEI constructed Plant 2 for the assembly of 3.5 Hard Disk Drive (HDD)
1996	NOV	LEI started its own SMT Assembly Line and started producing FDD-PCBA
1997	JUL	ISO 9002 Certification for the Plant 2 by SGS Yarsley Int'l. Certification Services Ltd.
1997	SEP	ISO 9002 Certification for the Plant 1 by TUV Product Service
1997	SEP	LEI-Plant 2 was renovated to assemble high capacity of IBM-NEC 3.5 Hard Disk Drive
1997	DEC	LEI-Plant 2 started production of IBM-NEC 3.5 Hard Disk Drive
1998	MAR	ISO 14001 Certification by SGS Int'l Certification Services
1998	MAR	LEI-Plant 1 started production of Zip drive
2003	MAY	ISO 9001 : 2000 certification by AJA Registrars, Inc.
2003	DEC	OHSAS 18001 : 1999 Certification by AJA Registrars, Inc.
2004	OCT	ISO/TS 16949 : 2002 Certification by SGS Philippines
2006	APR	LEI started its operation of Chip-on-Flex (COF)
2010	SEP	Company Name change to Tsukiden Electronics Philippines, Inc.
2011	SEP	ISO 13485:2003 Certification by SGS Philippines
2014	MAR	Started operation for extension facility LTC-SEZ (Bldg. 1) for the Assy of Multi Media Projector
2017	OCT	IATF 16949 : 2016 Certification (First company in PH certified by SGS)
2021	APR	Change Corporate logo to harmonize with Tsukiden Group of Companies

© 2024 Tsukiden Electronics Philippines, Inc.

Tsukiden Electronics Philippines, Inc. is a wholly owned subsidiary of Tsukiden Hong Kong Ltd.

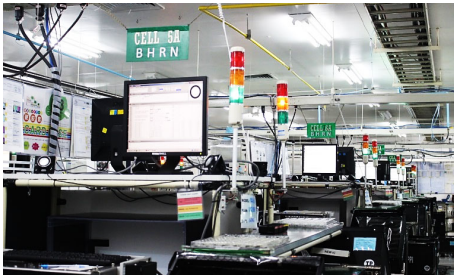
- Date of Incorporation - March, 1992
- Paid-up Capital - Php 300,000,000.00 (US\$7M)
- Plant/Start of Commercial operation/Area:
  - P1 : August, 1993
  - P2: September, 1995
- \* All sites are 100% backed-up by emergency power generator \*
- Number of Employees: 925 MP
- Production Lines : 4 Solder wave lines / 28 SMT lines with 400M shot count capability
- Chairman : Mr. Kazuma Hanzawa
- President : Mr. Edgardo Etac

© 2024 Tsukiden Electronics Philippines, Inc.





## POST ASSEMBLY LINE



© 2024 Tsukiden Electronics Philippines, Inc.

## RECEIVING AND ISSUANCE PROCESS FLOW

### RECEIVING OF PARTS FROM SUPPLIER



### PMC PARTS RECEIVING



### PMC PARTS ISSUANCE



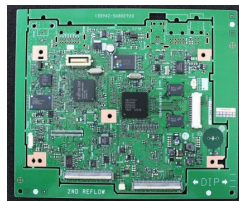
© 2024 Tsukiden Electronics Philippines, Inc.

- Ams Asia Philippines
- Applied Electronics Corporation (Japan)
- ARKUS Electronics Philippines Inc.
- BOSCH (Netherlands)
- CEBU MITSUMI, Inc. (Philippines)
- DELTADRIVE Phils. Inc. (Philippines)
- DENSO TEN Philippines
- DX Antenna Philippines, Inc.
- EDA Philippines Industries Inc.
- ELEMATEC Philippines, Inc.
- Epson Precision Philippines, Inc.
- GINTUGA Philippines, Inc.
- GLORY Ltd. (Philippines.)
- HOKUBU Communication (Japan)
- ISENSORS, Inc. (Philippines)
- Japan Display Inc. (Japan)
- JCM Gold (Japan)
- KAERTECH Limited (Hong Kong)
- LITTELFUSE Phils, Inc. (Philippines)
- MIDORIYA Electric (Philippines) Corporation
- MITSUBISHI HITACHI Power Systems, Ltd. (Japan)
- Northstar Technologies Industrial Corp (Philippines)
- Nikkoshi Phils. Corp. (Philippines)
- Nihon Denkei (Philippines)
- NOVALUX Electronics (Hongkong)
- SANKO Semiconductor Co., Ltd. (Japan)
- SANYO DENKI Philippines, Inc.
- SECURE ELECTRONICS Pty Ltd. (Australia)
- SUMITRONICS Philippines, Inc.
- SOLPHILS (Philippines)
- SUNBIRD Engineering Ltd. (Hong Kong)
- SUNPOWER Philippines Manufacturing Limited
- TOA Electronics Group (Japan)
- Tsukasa Electronics Philippines, Inc.

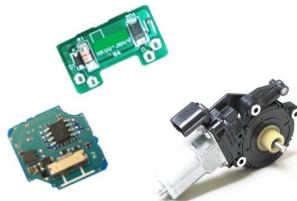
© 2024 Tsukiden Electronics Philippines, Inc.

## Automotive Electronics

### CAR Navigation System



Sensor & Power Window Controller



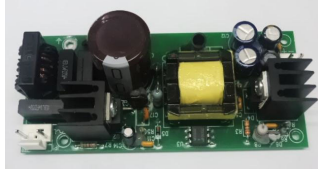
Turbo Sensor Assembly



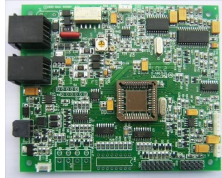
© 2024 Tsukiden Electronics Philippines, Inc.

## Medical

Pulse Oximeter



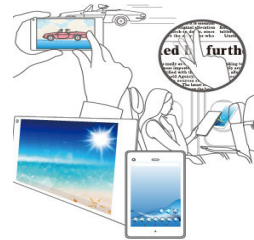
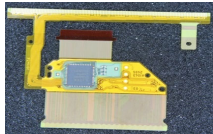
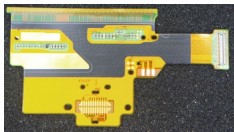
Medical Alert System



© 2024 Tsukiden Electronics Philippines, Inc.

## Telecommunication

Smart Phone & Tablet



Fiber Optics



Multi band cellular antennas

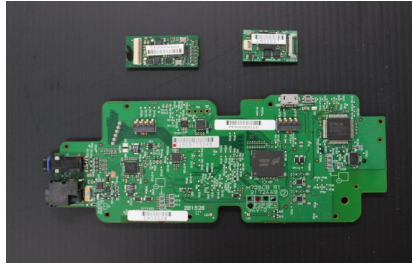


© 2024 Tsukiden Electronics Philippines, Inc.



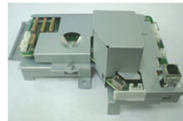
## Wearables

Smart Glasses



© 2024 Tsukiden Electronics Philippines, Inc.

## Consumer



Inkjet Printer



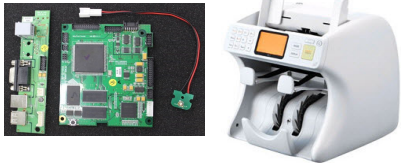
Multimedia Projector



© 2024 Tsukiden Electronics Philippines, Inc.

# Consumer

Cash Counting Machines



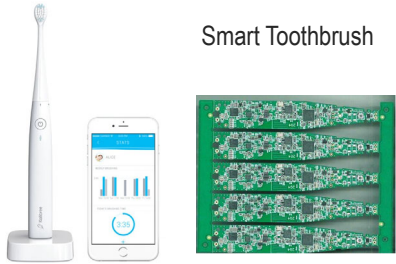
Portable Label Printer



Public Address System



Smart Toothbrush



© 2024 Tsukiden Electronics Philippines, Inc.

# Tsukiden

## Manpower Headcount

**MANPOWER**

• President/Japanese/Manager/Section Head	25
• Engineer	52
• Supervisor / Junior S.V. / Specialist	89
• Assistant	7
• Technician	51
• QA Inspector	40
• Operator (Regular)	152
• Contractual	509
<b>Total</b>	<b>925</b>

© 2024 Tsukiden Electronics Philippines, Inc.

**SEX/CIVIL STATUS**

	MANPOWER	MARRIED	SINGLE
MALE	18%	28%	72%
FEMALE	82%	16%	84%

**EDUCATIONAL PROFILE OF OPERATORS**

- College Graduate 26%
- College Level 9%
- 2-yr Vocational Course Graduate 13%
- 1-yr Vocational Course Graduate 6 %
- High school Graduate 46%

**(Environmental Management)**



ISO 14001 (Ver 2015)

Sept 2025



ISO 45001 (Ver 2018)

Sept 2025

**Tsukiden**

# Management System Certification (Quality Management)



ISO 9001 (Ver 2015)  
Sept 2025



ISO 13485 (Ver 2003)  
Sept 2014

© 2024 Tsukiden Electronics Philippines, Inc.

**Tsukiden**

# Management System Certification

**"The First Philippine company certified by SGS in IATF 16949:2016"**

IATF 16949 (Ver 2016)  
Feb 2024



© 2024 Tsukiden Electronics Philippines, Inc.



## Affiliated Companies

### **Electronics Manufacturing Service (EMS)**

Tsukiden Kogyo Co. Ltd. (JP) : [www.tsukiden.com](http://www.tsukiden.com)

Tsukiden Electric Industries Philippines, Inc. (PH) : [www.tsukiden-industries.com](http://www.tsukiden-industries.com)

### **Software Solutions**

Tsukiden Global Solutions, Inc. (PH) : [www.tsukiden.com.ph](http://www.tsukiden.com.ph)

### **Warehousing & Logistics**

Tsukiden Global Corporate Services, Inc. (PH) : [www.tsukiden-global.com](http://www.tsukiden-global.com)

### **Manpower Outsourcing**

Career Power Professional Management Services, Inc. (PH) : [www.careerpower.com.ph](http://www.careerpower.com.ph)

### **International Purchasing Office (IPO)**

Tsukiden Hong Kong Ltd. (Hong Kong)

© 2024 Tsukiden Electronics Philippines, Inc.



Thank you very much  
Mabuhay!

© 2024 Tsukiden Electronics Philippines, Inc.