



TSUKIDEN ELECTRONICS PHILIPPINES, INC.

COMPANY PROFILE

Rev. 00 (January 2026)

Bridging Customers to their Needs.



Your Electronic Manufacturing Service Provider
(EMS)

“Bridging Customer to their Needs”

Mission

To be the preferred company providing
high value added
Electronic Manufacturing Services
to our Customers.

© 2026 TSUKIDEN ELECTRONICS PHILIPPINES, INC.

Our Key Strength

- Using Up to date SMT Technology
- Highly Flexible and Motivated Employees
- Customer focused production set-up
- Can do both “ *high mix low volume and low mix high volume production*”.
- Can serve short lead-time product requirement.

Capabilities

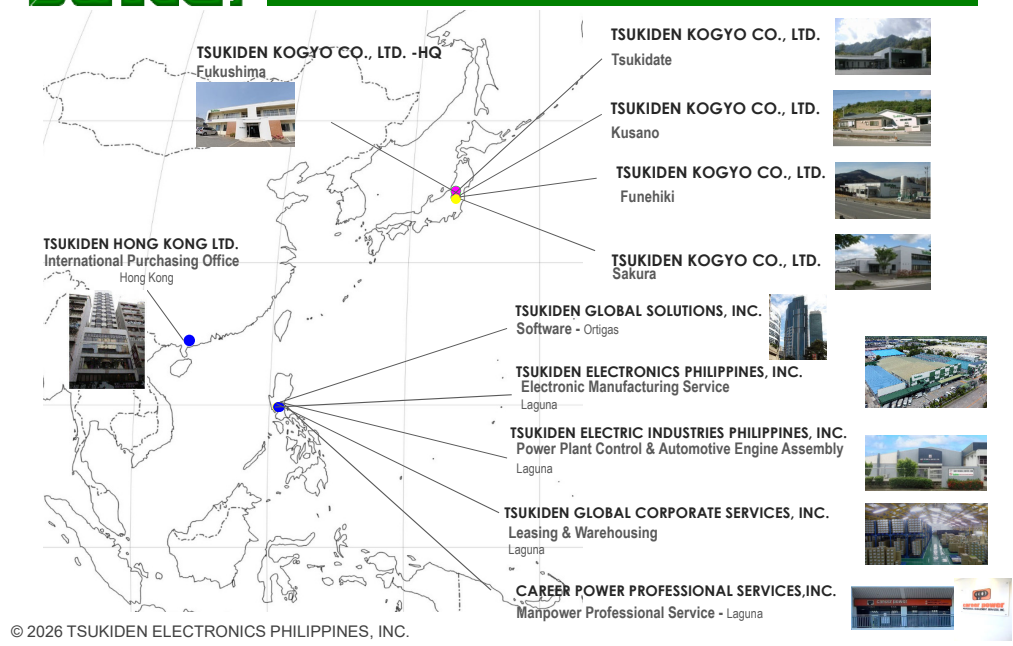
- | | |
|---------------------------------|--------------------------------------|
| • PCBA Assembly | • Automated Optical Inspection (AOI) |
| - SMT & Through Hole | • X-ray Inspection |
| • Chips on Flex Assembly | • Baking |
| • Sub Assembly & Complete | • BGA Rework |
| Box Build Assembly | • Robot Soldering |
| • Prototype Assembly | • Conformal Coating/Potting |
| • In-circuit/Functional Testing | • Incoming Inspection |
| • Burn-in Testing | Consignment & Turnkey |

Services

- Rework and Warranty Repair
- Design of PCB's for manufacturability
- Design for Testability
- Reliability test support
- Parts material storage and control

© 2026 TSUKIDEN ELECTRONICS PHILIPPINES, INC.

Tsukiden Group of Companies



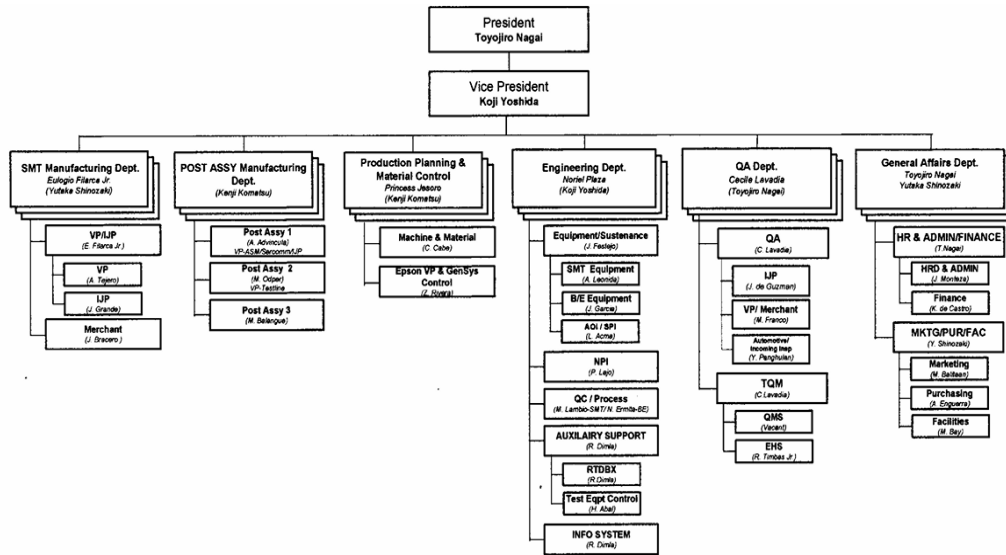
1987	JUN	Tsukiden Kogyo Philippines, Inc. start its operation in the Philippines
		Main activity is HDD/FDD PCB/FPC assembly sub-contracting
1988	JUL	Tsukiden Electronics Industries, Inc. (TEII) was established in Quezon City, Phils.
		Main business activity is assembly of computer peripherals particularly FDD
1989	NOV	TEII started production of 3.5 Hard Disk Drive (HDD)
1993	AUG	Laguna Electronics, Inc. (LEI) was established in Laguna Technopark, Biñan, Laguna
1994	MAY	LEI started production of Analog Mobile Phone
1995	SEP	LEI constructed Plant 2 for the assembly of 3.5 Hard Disk Drive (HDD)
1996	NOV	LEI started its own SMT Assembly Line and started producing FDD-PCBA
1997	JUL	ISO 9002 Certification for the Plant 2 by SGS Yarsley Int'l. Certification Services Ltd.
1997	SEP	ISO 9002 Certification for the Plant 1 by TUV Product Service
1997	SEP	LEI-Plant 2 was renovated to assemble high capacity of IBM-NEC 3.5 Hard Disk Drive
1997	DEC	LEI-Plant 2 started production of IBM-NEC 3.5 Hard Disk Drive
1998	MAR	ISO 14001 Certification by SGS Int'l Certification Services
1998	MAR	LEI-Plant 1 started production of Zip drive
2003	MAY	ISO 9001 : 2000 certification by AJA Registrars, Inc.
2003	DEC	OHSAS 18001 : 1999 Certification by AJA Registrars, Inc.
2004	OCT	ISO/TS 16949 : 2002 Certification by SGS Philippines
2006	APR	LEI started its operation of Chip-on-Flex (COF)
2010	SEP	Company Name change to Tsukiden Electronics Philippines, Inc.
2011	SEP	ISO 13485:2003 Certification by SGS Philippines
2014	MAR	Started operation for extension facility LTC-SEZ (Bldg. 1) for the Assy of Multi Media Projector
2017	OCT	IATF 16949 : 2016 Certification (First company in PH certified by SGS)
2021	APR	Change Corporate logo to harmonize with Tsukiden Group of Companies

© 2026 TSUKIDEN ELECTRONICS PHILIPPINES, INC.

TSUKIDEN ELECTRONICS PHILIPPINES, INC. is a wholly owned subsidiary of Tsukiden Hong Kong Ltd.

- Date of Incorporation - March, 1992
- Paid-up Capital - Php 407,000,000.00 (US\$7M)
- Plant/Start of Commercial operation/Area:
 - P1 : August, 1993
 - P2: September, 1995
 - * All sites are 100% backed-up by emergency power generator *
- Number of Employees: 888 MP
- Production Lines : 4 Solder wave lines / 28 SMT lines with 400M shot count capability
- Chairman : Mr. Junichi Ito
- President : Mr. Toyojiro Nagai

© 2026 TSUKIDEN ELECTRONICS PHILIPPINES, INC.



© 2026 TSUKIDEN ELECTRONICS PHILIPPINES, INC.

SMT PRODUCTION LINE



© 2026 TSUKIDEN ELECTRONICS PHILIPPINES, INC.

POST ASSEMBLY LINE

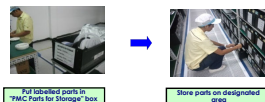


© 2026 TSUKIDEN ELECTRONICS PHILIPPINES, INC.

RECEIVING AND ISSUANCE PROCESS FLOW
RECEIVING OF PARTS FROM SUPPLIER



PMC PARTS RECEIVING



PMC PARTS ISSUANCE



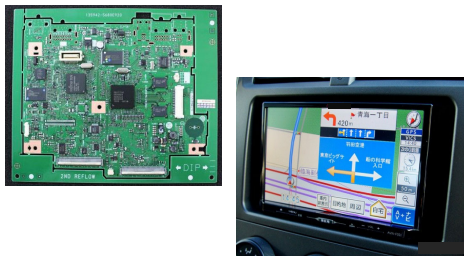
© 2026 TSUKIDEN ELECTRONICS PHILIPPINES, INC.

Ams Asia Philippines	MIDORIYA Electric (Philippines) Corporation
Applied Electronics Corporation (Japan)	MITSUBISHI HITACHI Power Systems, Ltd. (Japan)
ARKUS Electronics Philippines Inc.	Northstar Technologies Industrial Corp (Philippines)
BOSCH (Netherlands)	Nikkoshi Phils. Corp. (Philippines)
CEBU MITSUMI, Inc. (Philippines)	Nihon Denkei (Philippines)
DELTADRIVE Phils. Inc. (Philippines)	NOVALUX Electronics (Hongkong)
DENSO TEN PHILIPPINES CORPORATION (TNPH)	SANKO Semiconductor Co., Ltd. (Japan)
DX Antenna Philippines, Inc.	SANYO DENKI Philippines, Inc.
EDA Philippines Industries Inc.	Sekonic Corporation (Japan)
ELEMATEC Philippines, Inc.	SECURE ELECTRONICS Pty Ltd. (Australia)
Epson Precision Philippines, Inc.	SUMITRONICS Philippines, Inc.
GINTUGA Philippines, Inc.	SOLPHILS (Philippines)
ISENSORS, Inc. (Philippines)	SUNBIRD Engineering Ltd. (Hong Kong)
Japan Display Inc. (Japan)	SUNPOWER Philippines Manufacturing Limited
JCM Gold (Japan)	TOA Electronics Group (Japan)
JS CREATIVES PHILIPPINES INC.	Tsukasa Electronics Philippines, Inc.
KAERTECH Limited (Hong Kong)	
LITTELFUSE Phils, Inc. (Philippines)	

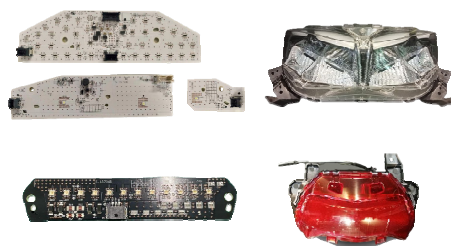
© 2026 TSUKIDEN ELECTRONICS PHILIPPINES, INC.

Automotive Electronics

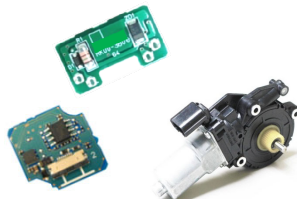
CAR Navigation System



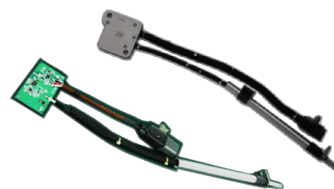
Motorcycle LED Lights



Sensor & Power Window Controller



Turbo Sensor Assembly



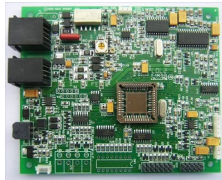
© 2026 TSUKIDEN ELECTRONICS PHILIPPINES, INC.

Medical

Pulse Oximeter



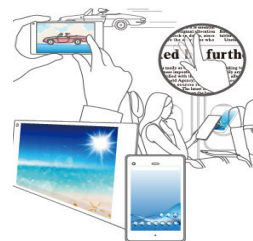
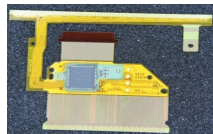
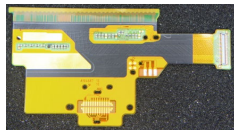
Medical Alert System



© 2026 TSUKIDEN ELECTRONICS PHILIPPINES, INC.

Telecommunication

Smart Phone & Tablet



Fiber Optics



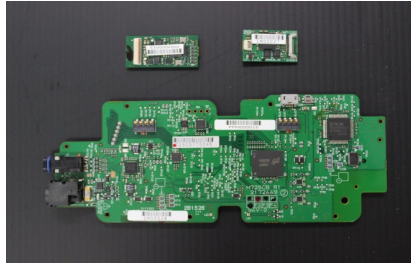
Multi band cellular antennas



© 2026 TSUKIDEN ELECTRONICS PHILIPPINES, INC.

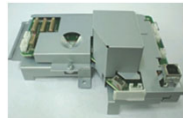
Wearables

Smart Glasses



© 2026 TSUKIDEN ELECTRONICS PHILIPPINES, INC.

Consumer



Inkjet Printer



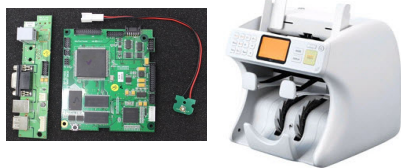
Multimedia Projector



© 2026 TSUKIDEN ELECTRONICS PHILIPPINES, INC.

Consumer

Cash Counting
Machines



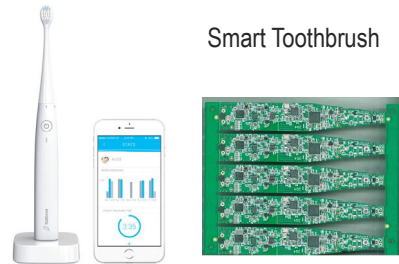
Portable Label Printer



Public Address System



Smart Toothbrush



© 2026 TSUKIDEN ELECTRONICS PHILIPPINES, INC.

Consumer

Audio Speakers



Square Series



Column Series

© 2026 TSUKIDEN ELECTRONICS PHILIPPINES, INC.

MANPOWER

• President/Japanese/Manager/Section Head	20
• Engineer	39
• Supervisor / Junior S.V. / Specialist	74
• Assistant	10
• Technician	33
• QA Inspector	25
• Operator (Regular)	140
• Contractual	547
Total	888

© 2026 TSUKIDEN ELECTRONICS PHILIPPINES, INC.

SEX/CIVIL STATUS

	MANPOWER	MARRIED	SINGLE
MALE	16%	24%	76%
FEMALE	84%	14%	86%

EDUCATIONAL PROFILE OF OPERATORS

• College Graduate	25%
• College Level	8%
• 2-yr Vocational Course Graduate	11%
• 1-yr Vocational Course Graduate	5 %
• High school Graduate	51%

© 2026 TSUKIDEN ELECTRONICS PHILIPPINES, INC.

Management System Certification (Environmental Management)



ISO 14001 (Ver 2015)
September 2028



ISO 45001 (Ver 2018)
September 2028

Management System Certification (Quality Management)



ISO 9001 (Ver 2015)
September 2028


IATF 16949 (Ver 2016)
June 2027

© 2026 TSUKIDEN ELECTRONICS PHILIPPINES, INC.

Electronics Manufacturing Service (EMS)

 Tsukiden Kogyo Co. Ltd. (JP) : www.tsukiden.com

 Tsukiden Electric Industries Philippines, Inc. (PH) : www.tsukiden-industries.com
Software Solutions

 Tsukiden Global Solutions, Inc. (PH) : www.tsukiden.com.ph
Warehousing & Logistics

 Tsukiden Global Corporate Services, Inc. (PH) : www.tsukiden-global.com
Manpower Outsourcing

 Career Power Professional Management Services, Inc. (PH) : www.careerpower.com.ph
International Purchasing Office (IPO)

Tsukiden Hong Kong Ltd. (Hong Kong)

© 2026 TSUKIDEN ELECTRONICS PHILIPPINES, INC.

Tsukiden

Thank you very much
Mabuhay!

© 2026 TSUKIDEN ELECTRONICS PHILIPPINES, INC.